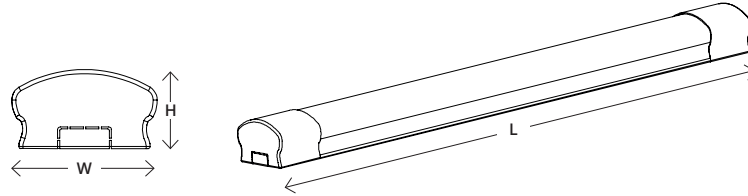


## INSTALLATION INSTRUCTION for Integral Lightspan Slim LED battens 3 Year Warranty



LED Batten Model	Function	Product Dimensions (mm) (LxWxH)
ILBTF071	2ft 20W 4000K Standard	600x72x38
ILBTF072	4ft 40W 4000K Standard	1200x72x38
ILBTF073	5ft 60W 4000K Standard	1500x72x38
ILBTF074	6ft 72W 4000K Standard	1800x72x38
ILBTF075	2ft 20W 4000K Motion sensor with 15% dimming	600x72x38
ILBTF076	4ft 40W 4000K Motion sensor with 15% dimming	1200x72x38
ILBTF077	5ft 60W 4000K Motion sensor with 15% dimming	1500x72x38
ILBTF078	6ft 60W 4000K Motion sensor with 15% dimming	1800x72x38
ILBTASK079	suspension kit 2 wires	2.0m
ILBTAJB080	junction box for Wago 221 3 way connectors	82x37x10

**Thank you for purchasing an INTEGRAL LED product. When installed correctly this unit will provide years of service – with no lamp changes required. For support or warranty information please see [integral-led.com](http://integral-led.com). Always turn off circuit power at the distribution unit before installation and maintenance. Please ensure that the power cannot be connected inadvertently.**

### Important Details – Please read prior to installation

**Ensure the AC/Mains power is NOT connected and cannot be unexpectedly reconnected during installation.**

1. This product must be installed by a competent qualified electrician in accordance with the instructions provided and in compliance with recognised electrical and safety regulations relevant to the country in which it is being installed.
2. This product is suitable for installation on surfaces with normal flammability e.g. wood, masonry. Before making the fixing hole(s), check that there are no obstructions hidden beneath the mounting surface, such as pipes or cables. It is not suitable for use on highly flammable surfaces or in a flammable atmosphere.
3. For ceiling, wall mounted or suspended installations please follow “Installation instructions” below. For surface mount, this product must be securely fixed to the mounting surface using the brackets, screws and wall plugs supplied (Fig. 1). The screws and wall plugs are suitable for “masonry” only.

**IMPORTANT! This product is a Class I device and must be connected to an earth termination.**

### Installation Instructions

1. The unit is pre-wired with cable at the rear of the product to connect to incoming mains cable. The length of pre-wired cable equals half the batten length plus 10cm.
2. Connect the mains supply cable to the pre-wired cable of the batten using suitable connectors. LIVE, NEUTRAL and EARTH are required to be connected.

### Surface mount installation (Fig. 2 - 5)

1. These can be ceiling and wall mounted.
2. Secure the supplied brackets to the surface as shown in the diagram and press the batten carefully onto the brackets.
3. Cabling can be routed along the recess at the back of the batten and out the end caps which have breakouts, so that the batten lies flush to the surface.
4. For secure sensor operation the product should be ceiling mounted. Fix the brackets using the fixing supplied or alternative suitable fixings to secure the bracket in place. Please ensure brackets are in line and fixed perpendicular to the desired position for the central longitudinal axis of the product. Ensure the brackets are in line and at a spacing within the overall length of the product to be installed. Place a minimum distance of 400mm apart.

*An optional junction box is available that fits inside the recess at the back of the batten. This is suitable for Wago 221 3way connectors (Fig.6 and Fig.7)*

## Suspended installation

Requires suspension mount kit ILBTASK079 which can be ordered separately.

## Motion Sensor operation for motion sensing units

1. The microwave sensor version will dim the sensor to 15% brightness when no motion is detected.
2. When motion is detected the batten will illuminate at full brightness with a 30s hold time after there is no more motion detected. The recommended installation height is 3 to 4 metres. The maximum detection area radius is 4 to 4.5 metres.

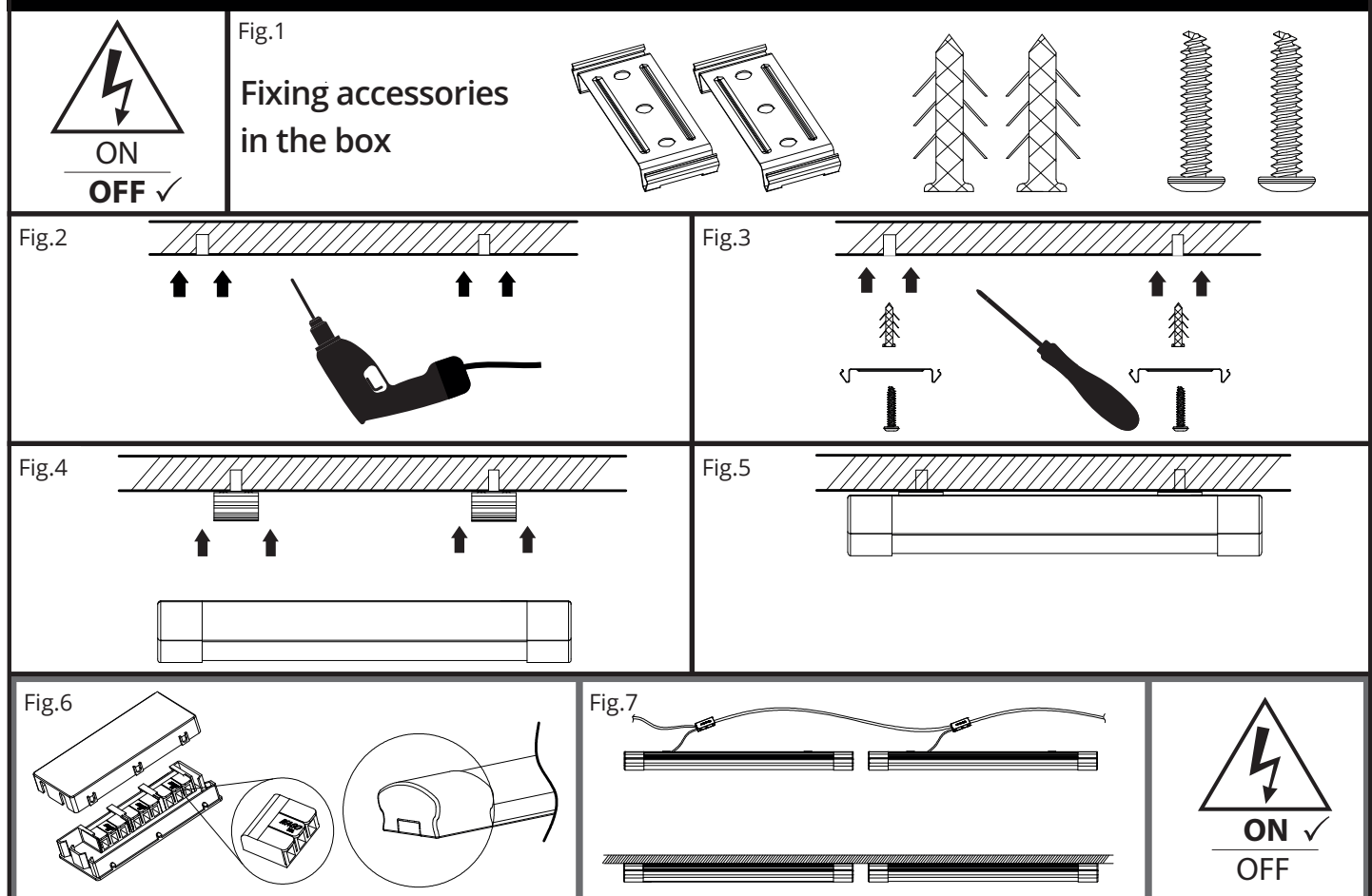
## Warranty

This unit carries a 3 year warranty from the date of purchase, providing that it has been installed correctly and not modified in any way. Should a fault occur please contact the original place of purchase.

## Important Notes

- Operating and luminaire must be within rated temperature -20°C to +40°C avoiding extreme humidity.
- Operation must be within rated input voltage.
- Keep away from strong electromagnetic radiation sources and protect from lightning strike.
- Should the unit malfunction, return to distributor or reseller. No user serviceable parts inside. Do not disassemble or attempt to repair the luminaire outside of the installation guidelines.
- Do not install or use the luminaire if the housing/diffuser is found to be broken.
- Do not apply direct pressure to the diffuser.
- The luminaire must be installed by a qualified electrician.
- The luminaire should be positioned away from heat, vibration and liquid. Avoid contact with any corrosive chemicals.
- The luminaire should be positioned to allow normal convectional cooling within free flowing air and an ambient temperature not exceeding 30°C.
- Never cover the luminaire with heat insulation materials.
- The luminaire should be positioned at least 1 metre away from radios, failure to do so may affect radio reception.
- For indoor use.

## Installation diagrams



WASTE ELECTRICAL PRODUCTS SHOULD NOT BE DISPOSED OF WITH HOUSEHOLD WASTE. PLEASE RECYCLE WHERE FACILITIES EXIST. CHECK WITH YOUR LOCAL AUTHORITY FOR RECYCLING ADVICE.

CE RoHS IP20



Warranty/Technical and contact information are all available at [www.integral-led.com](http://www.integral-led.com)

Integral LED is a division of Integral Memory plc:  
Unit 6, Iron Bridge Close, Iron Bridge Business Park,  
London, NW10 0UF, UK